



Ebenezer

United Methodist Church

Welcome

January 6, 2019

Order of Worship

January 6, 2019

Epiphany of Our Lord

11:00 a.m.

*Prayer Cards are located in the back of the pew in front of you.
If you would like to submit a prayer request, please fill out the information on the card. Please place them in the offering plate and they will be given to the pastor.*

**Invitation to Stand*

Announcements Lee Dorough
Liturgist

Registration of Attendance **Attendance Insert In Bulletin**

Prelude Rosa Lee

*Hymn of Praise *"Marching to Zion"* Hymnal No. 733

*Invocation Lee Dorough

*Affirmation of Faith Apostles' Creed Hymnal No. 881

* Gloria Patri Hymnal No. 70

Presentation of Tithes and Offerings

Offertory Prayer Lee Dorough

Offertory Music

*Doxology *"Praise God From Whom All Blessings Flow"* Hymnal No. 95

Offering Our Praises and Concerns to God

Prayer Time and Pastoral Prayer Pam Akin

The Word for the Child In All of Us Sherri Alderson

Children ages 3 years old through 2nd grade are dismissed to Children's Church in Rm E110 in the Education Building, directly across from the Sanctuary.

Message **Choose to Live Chosen** Pam Akin

*Closing Hymn *"Lord, I Want to Be a Christian"* Hymnal No. 402

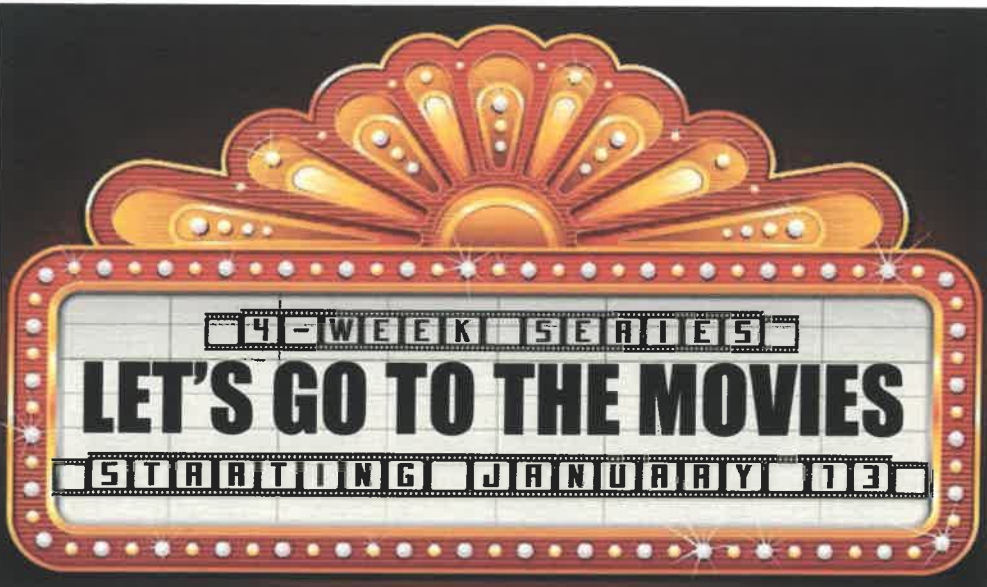
Postlude Rosa Lee

PRIME TIMERS MONTHLY MEETING

The Prime Timers will meet Thursday, January 10th in the Student Warehouse at 10:30 am. Lunch will be catered by Chef Banks. The cost of the meal is \$8.00. Please remember your donation of food and grocery bags for the food bank. To RSVP or to get more information, please call Joyce Rosser at (770) 483-2242.

STAFF CHRISTMAS LOVE OFFERING - THANK YOU!

The Ebenezer Staff, Preschool Staff and Volunteers would like to thank the congregation for your very generous contributions to the Staff Christmas Love Offering. We thank God for the opportunity to be in ministry with our Ebenezer family. May God richly bless each of you as we begin a new year serving Christ together!



Some movies entertain us. Some make us laugh. Others inform us. The best ones inspire us. They have a way of communicating unlike any other art form. They often tell powerful stories of human experience that draw us to the edge of our seats. We can become so enmeshed in the story lines that we begin to see ourselves and our lives played out on the big screen.

And, whether filmmakers know it or not, God's imprint can be found all over their stories. Many films contain messages of hope, images of the Savior, inspirational stories, and encouragement for those struggling with life. Beginning January 13th, Pastor Sheila will start a 4-week series: Let's Go to the Movies. This series will feature several of our church members' favorite movies.

The series is not a critique of the movies. They are not intended to be an endorsement the movies. Nor are they meant to be lightweight sermons for us to take a break following the Christmas season from biblical truths. Instead, they will be an opportunity for us practice the art of "noticing" where God's story creeps in unintended or uninvited into today's culture.

Like Jesus used stories and parables to point to spiritual truths, we will be using Hollywood's best as illustrations for divine instruction. We will compare the twists and turns of the theatre with the realities of our lives and learn where God has called us to grow more like him.

Our Gifts to God

Weekly Target	\$6,650	Week 52 YTD Giving	\$353,357
Prior Week Giving	\$4,865	YTD Over / (Under)	\$7,557
Over / (Under)	(\$1,785)	52 Week Average	\$6,792

Worship Attendance	95
Sunday School	42

LISTENING TO THE SERMON

Listen to the message from God's word. Use this space to make some personal notes. Go back over them during the coming week. Let God crystallize His truths in your life.

Sermon Title: Choose to Live Chosen

Biblical Text:

Main Ideas of the Sermon:

1. _____

2. _____

3. _____

4. _____

5. _____

Illustrations I Want to Remember:

What Should I Do as a Result of Hearing this Sermon:

With a quick text message, you can now make a contribution to Ebenezer UMC

Simply send a text to 770-629-0571 with the amount you would like to contribute. *Make sure to include the dollar sign before the amount. Example: \$25.* Within a few minutes, you'll be sent a text with a link to register. Click the link and enter your cardholder name and credit or debit card information. Once your registration is complete, you will receive a text verification and a receipt via email. For future giving, simply send a text with the amount you wish to give, and it will process automatically!

9:45 - 10:30 am Infant and toddler nurseries are in the Education Building along with Sunday School for children 2 years of age and older. Age or grade classes are marked on the outside of each room.

11 am Infant, toddler and 2-year-old nurseries are located in the Education Building. Children 3 years old - 2nd graders are escorted from the Sanctuary to the Education Building for Children's Church. Children are to be picked up promptly after worship.

WELCOME VISITORS AND MEMBERS

Whether you are a first time visitor, a regular attendee or a member, we want to know that you are here! Please take a moment to fill out the "Record of Attendance" postcard included in your bulletin, and place it in the collection plate during the offertory. If you would like to make Ebenezer your church home and wish to speak with Pastor Sheila, please check the box on the attendance form. Thank you for choosing to spend your Sunday morning with us. Wherever you are on your spiritual journey, you are welcome at Ebenezer!!

If you are interested in joining our church family, please fill out the "Record of Attendance, noting that you would like to join the church. Once completed either place it in the offering plate or give it to the pastor. The pastor will then speak with you about your decision and set up a date for you to join Ebenezer UMC.

*Rev. Sheila Crowe, Pastor
Office: (770)922-8447 ext 15
pastor@ebenezerconyers.com*

*Pam Akin, Director of Music
Office: (770) 922-8447
pamakin@att.net*

*Sherri Alderson, Director of Children's Ministry
Office: (770) 922-8447 ext 12 Cell: (770) 576-5302
salderson2@gmail.com*

*Paige Rogers, Church Administrator
Office:(770) 922-8447 ext 14 Cell: (404) 290-0990
paigerogers@ebenezerconyers.com*

*Office Hours: Monday - Thursday, 9 am - 4:30 pm
2533 Stanton Road - Conyers, GA 30094 - (770) 922-8447
www.ebenezerconyers.com*

If you have questions about youth ministry at EUMC, please contact the church office.

SERVE

WORSHIP

GROW

CONNECT

We are Ebenezer UMC: a church which makes and equips Christian disciples who serve the world like Christ, gather together to worship our God, grow with the Spirit, and connect with others.